



Thank you for purchasing one of our RC Modules. We hope it will give you many years of trouble free service. If you have any problems with your module, please either email or contact our technical support helpline first on the number provided on the last page. We are sorry that it is a mobile number, but we work between three sites and find that our mobiles are far more versatile for our voice communication needs.

Before pressing your switching module into service, please carefully read through the installation drawings, notes and information below.

Please follow the wiring protocol as in the drawing. The Conductors/Ports are clearly marked. Do not connect them to anything other than what is described. 'Load' is your Gas Valve'.

Irreparable damage will occur to the internal components of the module if you:

Short Circuit The 'Load' Connections.

Cross Polarise The Supply (Batts) Connections(Positive on Negative, etc.)

Exceed the Maximum 4.2 A (4200mA) Load

Allow water or fluid to enter the module.

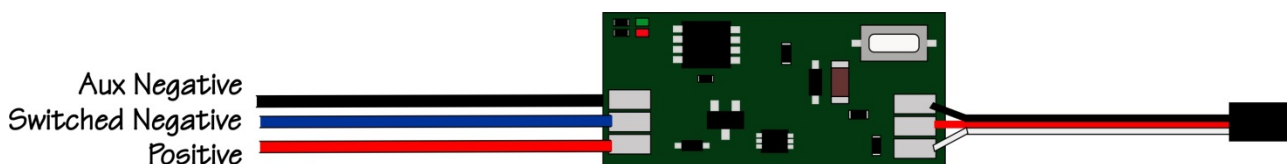
CONNECTIONS

There are three available connections, all of which are to connect up to the load connections of the Gas Valve.

RED – Connects to the positive side of the gas valve solenoid – if there are no polarity marking on the solenoid, it is not polarity conscious, connect to either connection.

BLUE – Connects to the Negative side of the Gas Valve – Once again, if there are no polarity marking on the solenoid, it is not polarity conscious, connect to the other connection.

BLACK – AUXILIARY Negative – This is normally unused. Provides a Negative Supply Backup when needed.



USING

Momentary RC switch action (On/Off) activates the timer, and switches on the RED LED and the Gas Valve Supply. The GREEN LED Counts Down in Seconds (10 Second Variant) After the preset time has been achieved, the RED LED extinguishes and the GREEN LED goes back to keep alive status.

Holding the RC Channel switch On, bypasses the timer and allows a long continuous burn, once the RC Switch is released back to OFF the timer kicks in and the valve is held open for the preset time.

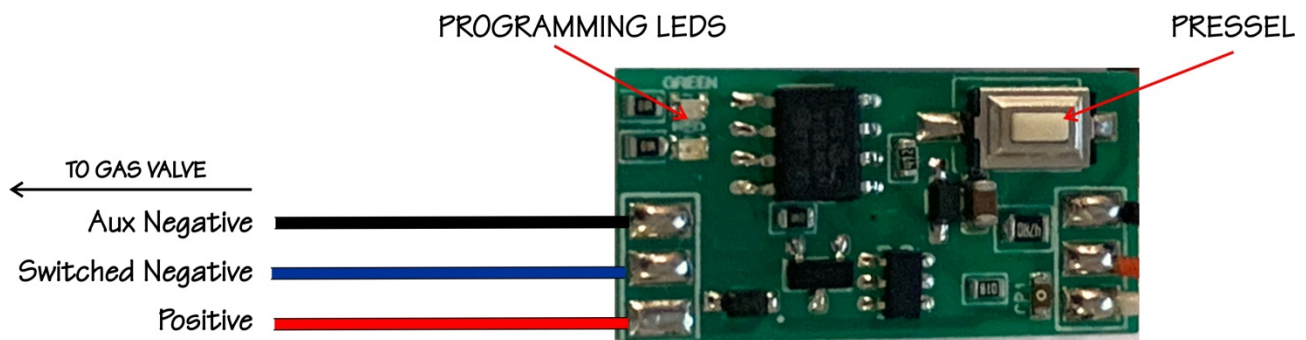
The module holds the timing in perpetual memory until you change the timing value.

The GREEN LED flashes approximately every 2 seconds as an keep Alive or Alive Status.

PROGRAMMING

To adjust the preset time, (10 Second Variant)

- 1.) Press and Hold the PRESSEL Switch until the LED's extinguish.
- 2.) Release The PRESSEL, The GREEN TIMING LED will begin to count up in Seconds.
- 3.) Hitting the PRESSEL again when your desired time is reached sets the timer.
- 4.) The GREEN LED will now display in Flashes your preset time, it is now ready for use.



20 Second and 30 Second Variants

Follow the same Routine as above with the difference being the GREEN Timing LED will display time in 2 Second or 3 Second intervals respectively.

Should you need technical support for your purchase, please call +4475 9998183 (075 99998183) between 9am and 5pm Monday to Friday. Please remember, we are a Micro-Business, ***We DO NOT HAVE*** a dedicated sales desk or enquiries/support staff consequently it may take a few attempts to speak with us. If you find this frustrating, please drop us an email with your name and a phone number and we will return your call as promptly as possible.

Email: support@mr-rcworld.co.uk

Regards - The Mr RC World Crew